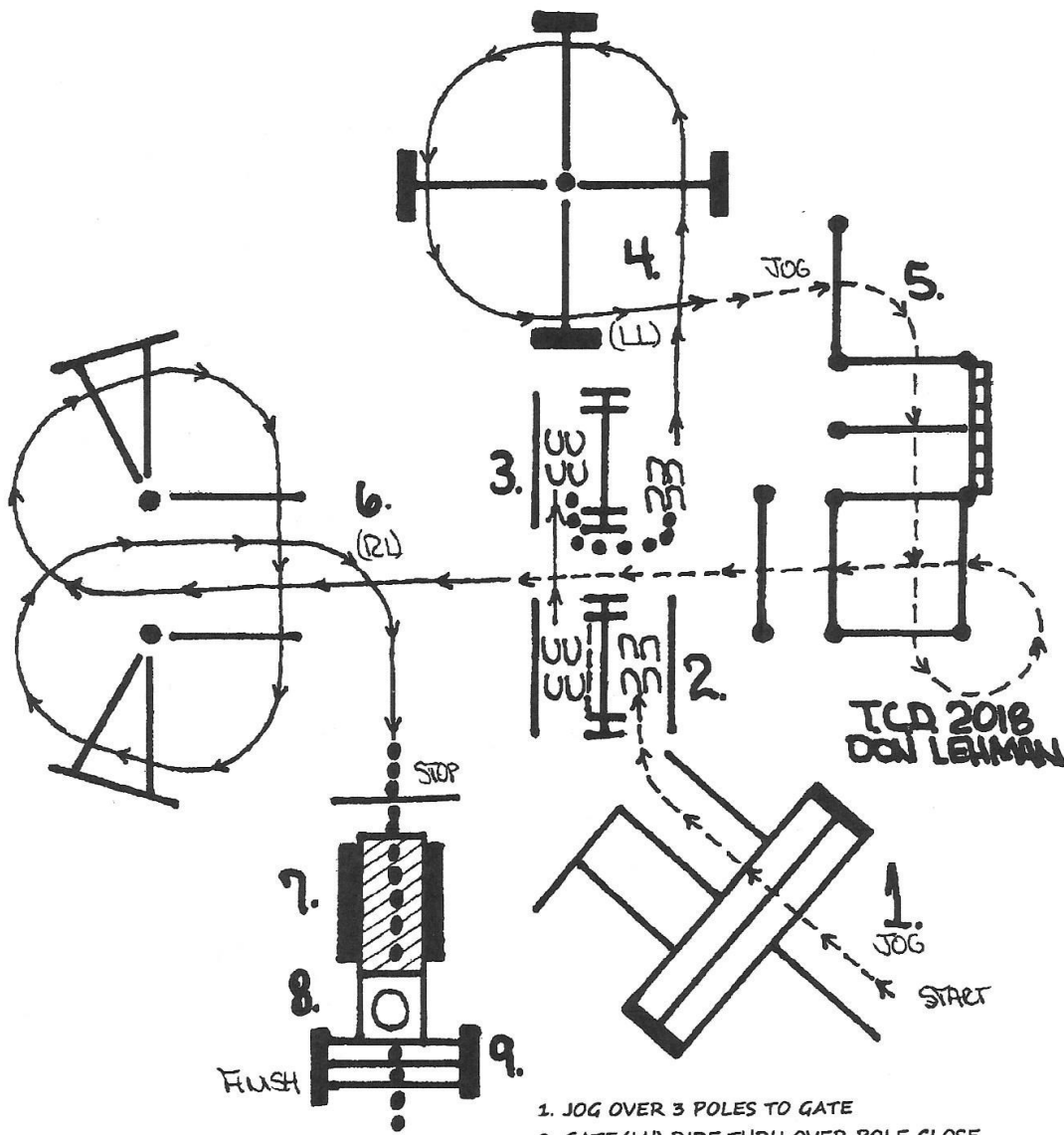


Copper Country POR

Trail

TUESDAY
JAN. 2, 2018

312-JUNIOR HORSE
314-AMATEUR SPB
315-SPB
316-YTH 18 + UNDER SPB
217-YTH 13 + UNDER



1. JOG OVER 3 POLES TO GATE
2. GATE:(LH) RIDE THRU OVER POLE CLOSE
3. BACK STRAIGHT BACK TO 2nd GATE & STOP
4. WALK AROUND GATE, LOPE OVER POLES (LL)
5. JOG THRU SERPENTINE & OVER POLES
6. LOPE OVER POLES (RL) & STOP AT POLE
7. WALK OVER POLE, BRIDGE & INTO BOX
8. 360 EITHER WAY WALK OUT
9. WALK OVER POLES