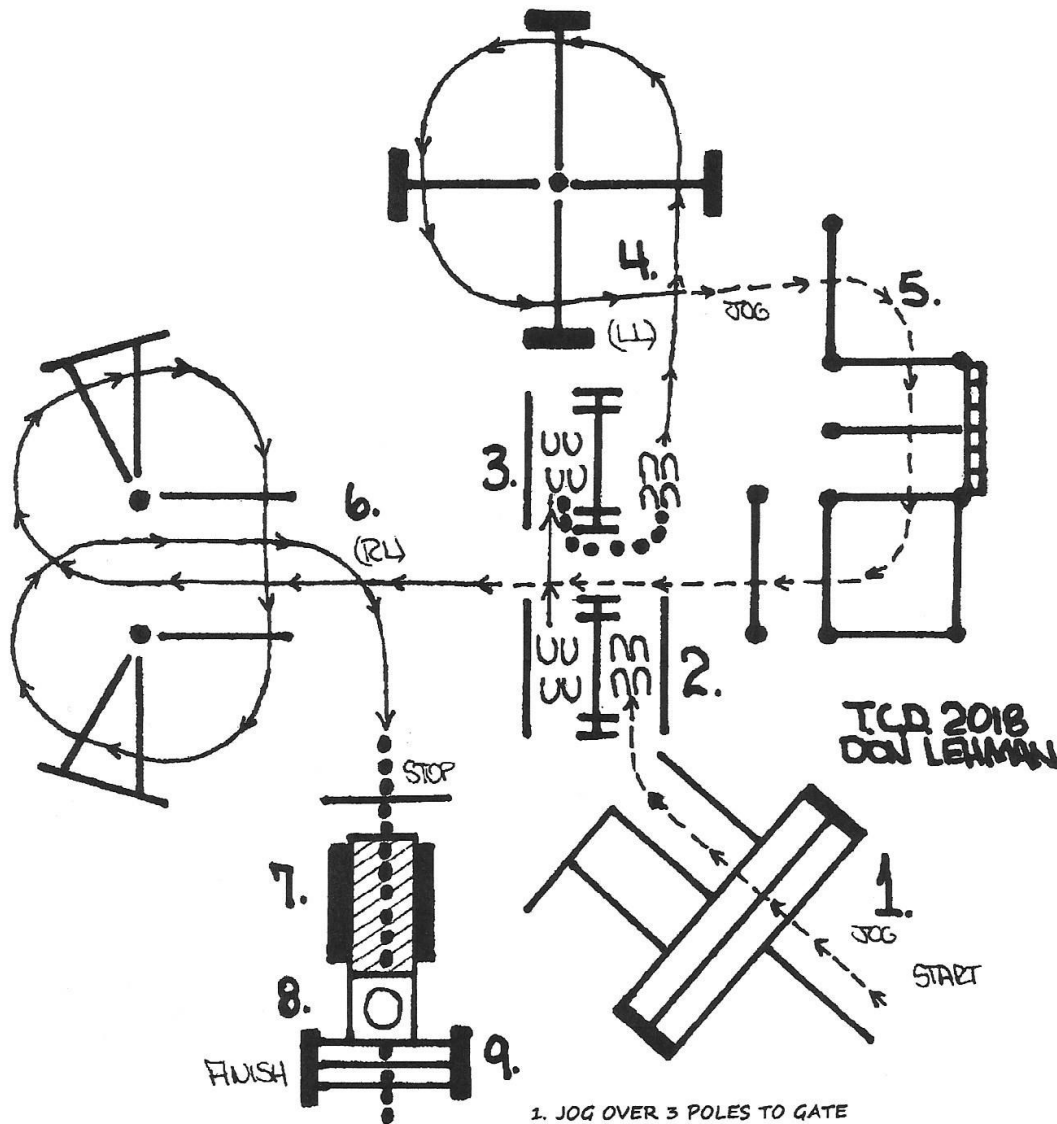


Copper Country POR

Trail

TUESDAY
JAN. 2, 2018

307-APHA GREEN HORSE
309-NOV. YTH.
310-NOV AMA



1. JOG OVER 3 POLES TO GATE
2. GATE:(LH) RIDE THRU CLOSE
3. BACK STRAIGHT BACK TO 2nd GATE & STOP
4. WALK AROUND GATE, LOPE OVER POLES (LL)
5. JOG THRU SERPENTINE & OVER POLES
6. LOPE OVER POLES (RL) & STOP AT POLE
7. WALK OVER POLE, BRIDGE & INTO BOX
8. 360 EITHER WAY WALK OUT
9. WALK OVER POLES